

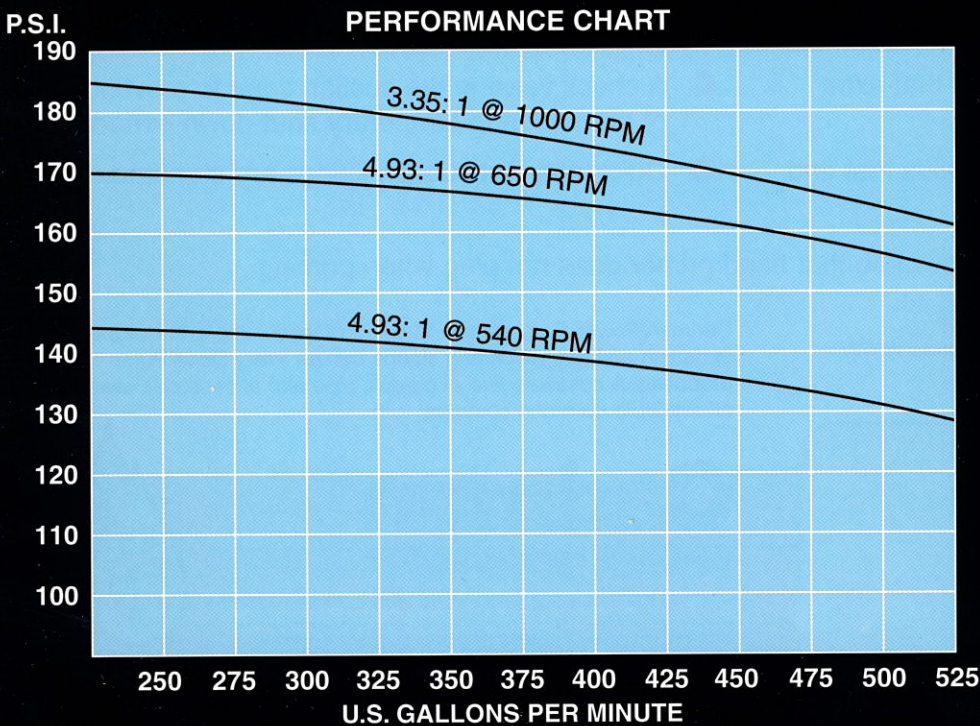
DODA LIQUID MANURE PUMP

SINCE 1952

50

YEARS OF
EXCELLENCE

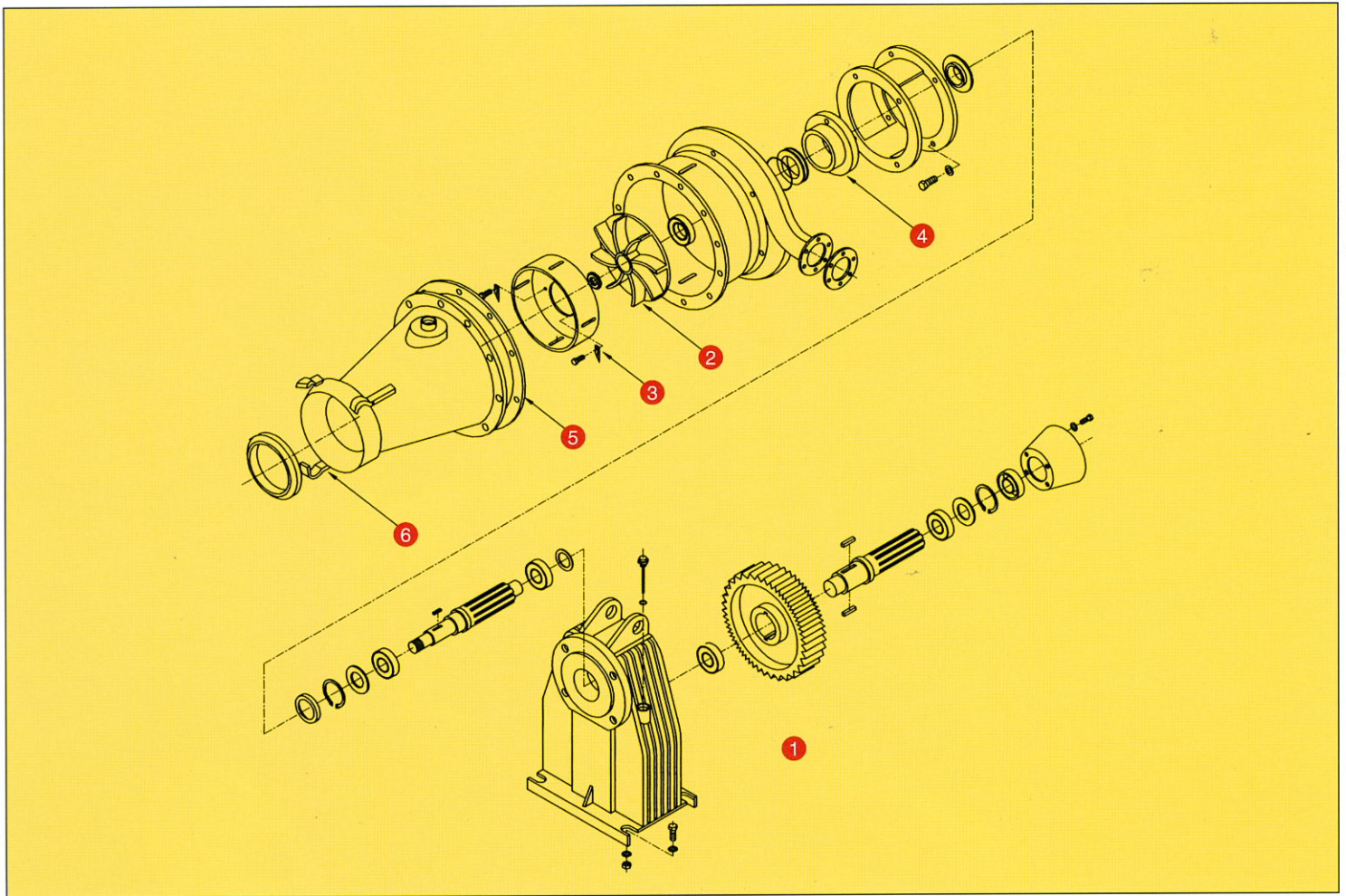
Cadman
POWER EQUIPMENT
Limited



**THE CADMAN
PUMP DIFFERENCE**
strength...
simplicity...
dependability

Cadman
modifies all
new Doda
pumps they
sell to meet
their rigid
specifications
of quality and
performance.





The Doda Manure Pump has a number of features that make it a cut above the rest.

THESE FEATURES INCLUDE:

- 1 A tough gear box capable of handling the higher horsepower requirements of the larger gallonages and pressures.
- 2 High pressure capability to help push that extra volume and distance.
- 3 Static cutter knives to chop up any solids that find their way into the pump.
- 4 A mechanical seal with a secondary lubrication and located separate from the gear case which prevents gear box failure due to seal failure.
- 5 A check valve in the suction cone to prevent loss of prime during temporary shut-down periods.
- 6 Quick connect suction fittings are standard.
- 7 Overflow tank (not shown) so that hand primer does not plug when priming

Cadman Power Equipment Limited, whose policy is one of continuous improvement, reserves the right to change specifications, design or prices without incurring obligation.

Cadman Power Equipment's 43 years of leadership and experience in design and manufacturing stands behind every Doda Pump produced. A complete line of pumps, pipe and accessories are all available from one company.

Cadman
POWER EQUIPMENT
Limited



AGRICULTURAL MACHINERY AND IRRIGATION EQUIPMENT
 Box 100, Courtland, Ontario, Canada NOJ 1E0
 Phone (519) 688-2222 • Fax (519) 688-2100
 E-mail: inquiries@cadmanpower.com www.cadmanpower.com